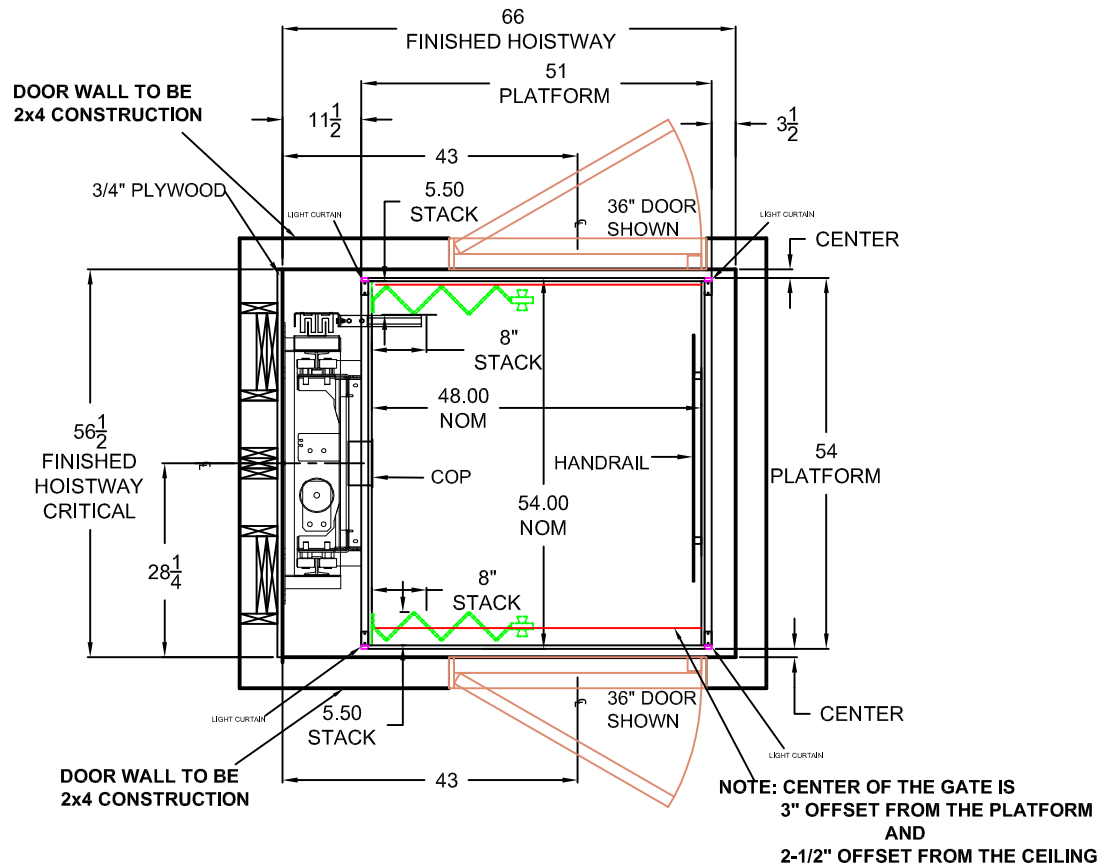


48" x 54" ELMIRA LEFT THRU CAB



SPECIFICATIONS

ROPED 1:2 HYDRAULIC DRIVE SYSTEM. GALVANIZED AIRCRAFT CABLE 2 X 3/8" ϕ 7 X 19 CONSTRUCTION BREAKING LOAD: 14,388 LBS (64.0 KN) OLS 70MM OR 90MM HYDRAULIC CYLINDER OPTICAL LEVELING SYSTEM. SLACK ROPE MACHINED SAFETY BLOCK WITH INTEGRATED SAFETY SWITCH. ROLLER GUIDE SLING. 2 SPEED 4 COIL VALVE POWER UNIT (SOFT START AND STOP AT EACH LANDING). 1" MANUAL SHUT-OFF VALVE, LOW PRESSURE SWITCH, & LINE RUPTURE VALVE 0.20 M/S (40 FPM) TRAVEL SPEED-NOMINAL 3/4/5 HP POWER UNIT WITH SUBMERSED MOTOR FOR QUIET OPERATION. L.E.D. DUAL COLOR ILLUMINATED PUSH BUTTONS IN CAR OPERATING PANEL & HALL CALLS. CAR OPERATING PANEL WITH INCORPORATED DIGITAL POSITION INDICATOR, PHONE BOX & PHONE. AUTOMATIC ONE TOUCH CONTROLS. BATTERY BACK-UP FOR EMERGENCY LOWERING AND DOOR OPENING.

PROVISIONS BY OTHERS

- 1) INTERIOR SURFACE OF HOISTWAY MUST BE PLUMB FROM THE BOTTOM TO THE TOP OF THE HOISTWAY WITHIN 1/8"
- 2) MACHINE ROOM AND HOISTWAY TO MEET REQUIREMENTS OF LOCAL CODES
- 3) ELECTRICAL CONTRACTOR TO SUPPLY ONE DEDICATED CIRCUIT GROUND INCLUDED CABLE TO POWER UNIT LOCATION
- 4) ELECTRICAL CONTRACTOR TO SUPPLY DEDICATED 120 VAC SINGLE PHASE 15 AMP SERVICE TO A LOCKABLE FUSED DISCONNECT ON CONTROL PANEL FOR CAB LIGHTING
- 5) PROVIDE CONNECTION TO OUTSIDE PHONE LINE FOR INTEGRATION INTO CAMBRIDGE ELEVATING CONTROLLER (PHONE LINE ALREADY IN ELEVATOR TRAVEL CABLE)
- 6) PROVIDE APPROPRIATE SLEEVES FOR BOTH ELECTRICAL CONDUIT AND HYDRAULIC LINE FROM DRIVE UNIT TO HOISTWAY
- 7) ONLY ELEVATOR MECHANICAL EQUIPMENT OR WIRING TO BE IN THE HOISTWAY
- 8) SUITABLE LINTELS OVER LANDING ENTRANCES ARE TO BE PROVIDED
- 9) PROVIDE PIT WATER PROOFING OR SUMP PUMP IF NECESSARY
- 10) SOLID CORE LANDING DOORS PROVIDED BY OTHERS



1696 Booth Avenue, Coquitlam, B.C. V3K 1B9

Ph: 604-777-3787

www.westernelevator.com